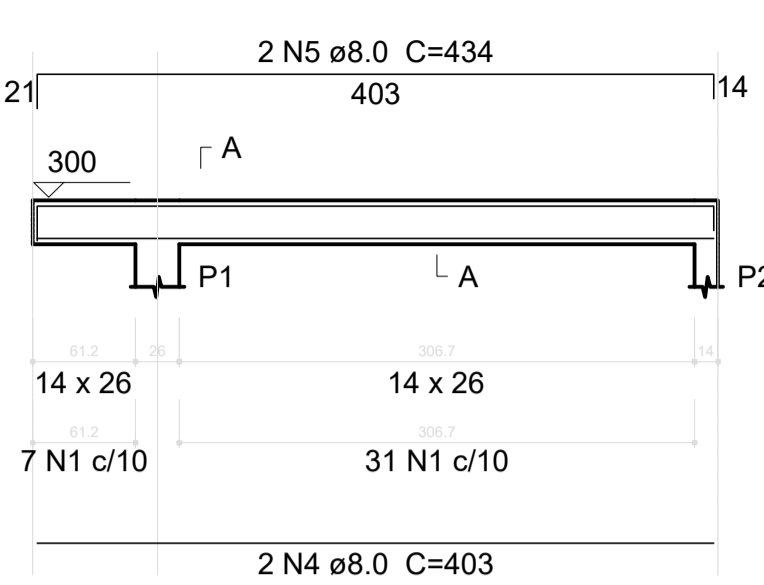
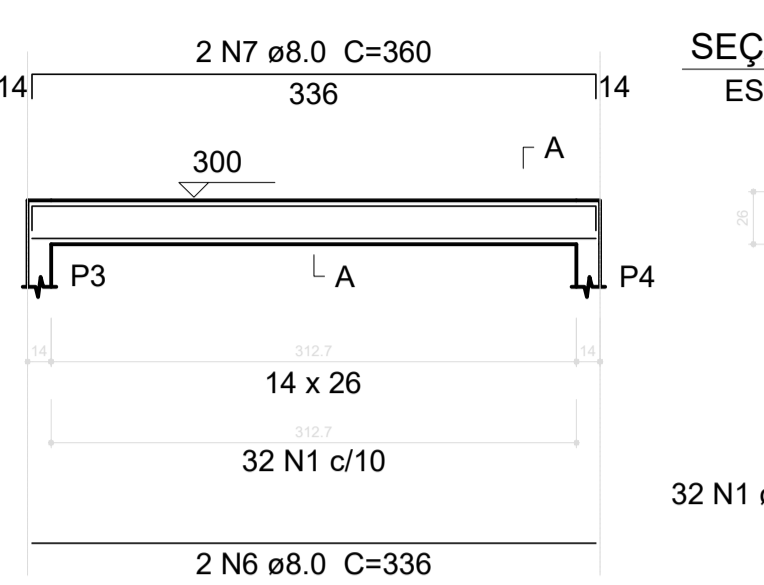


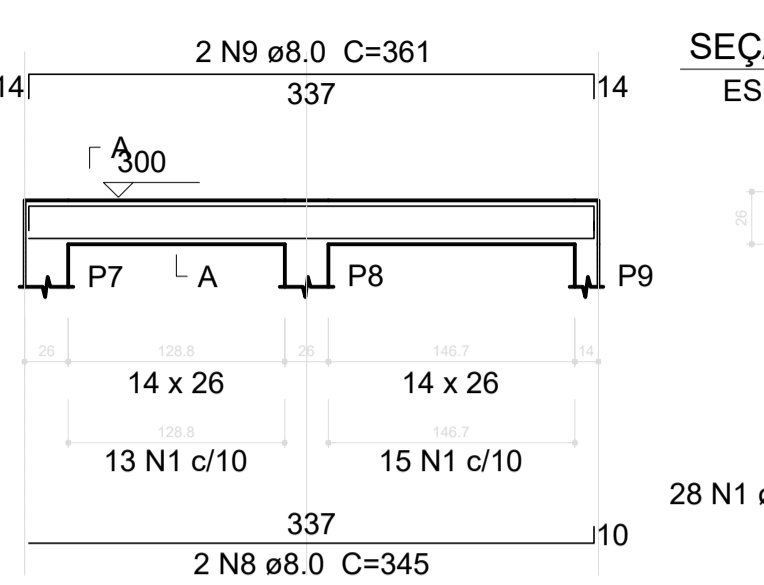
V201



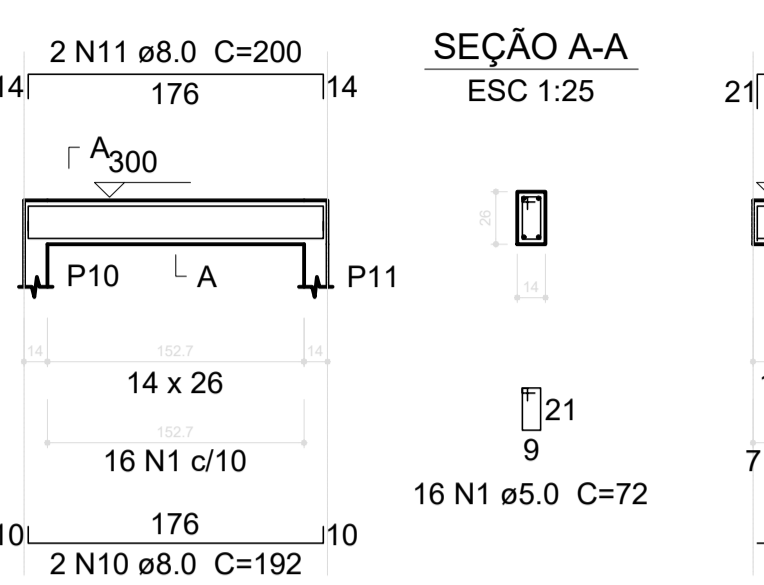
V202



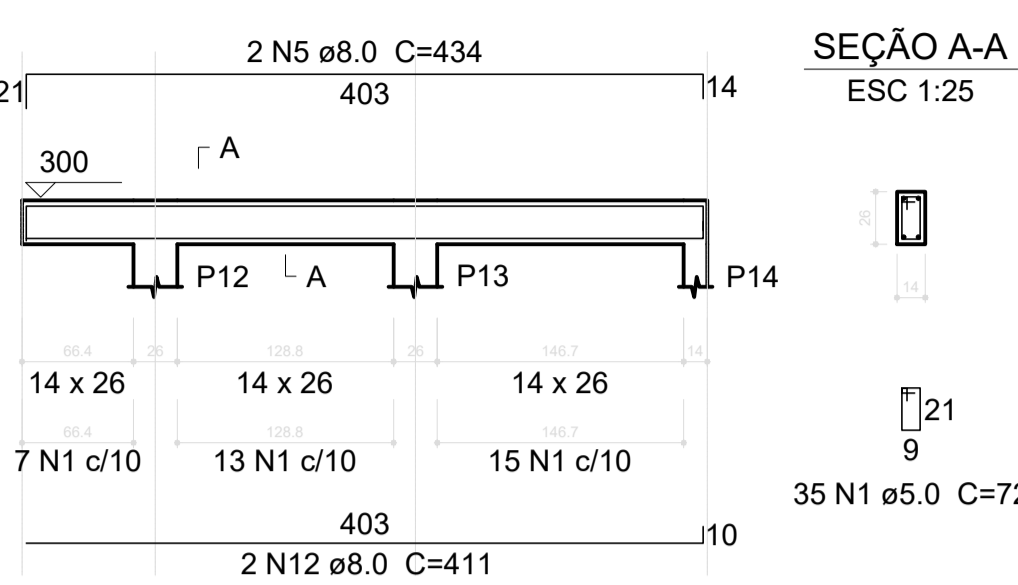
V203



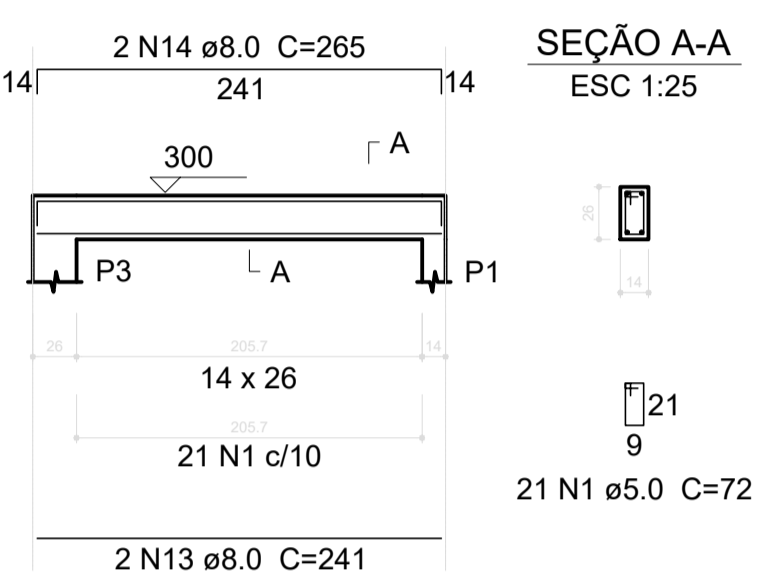
V204



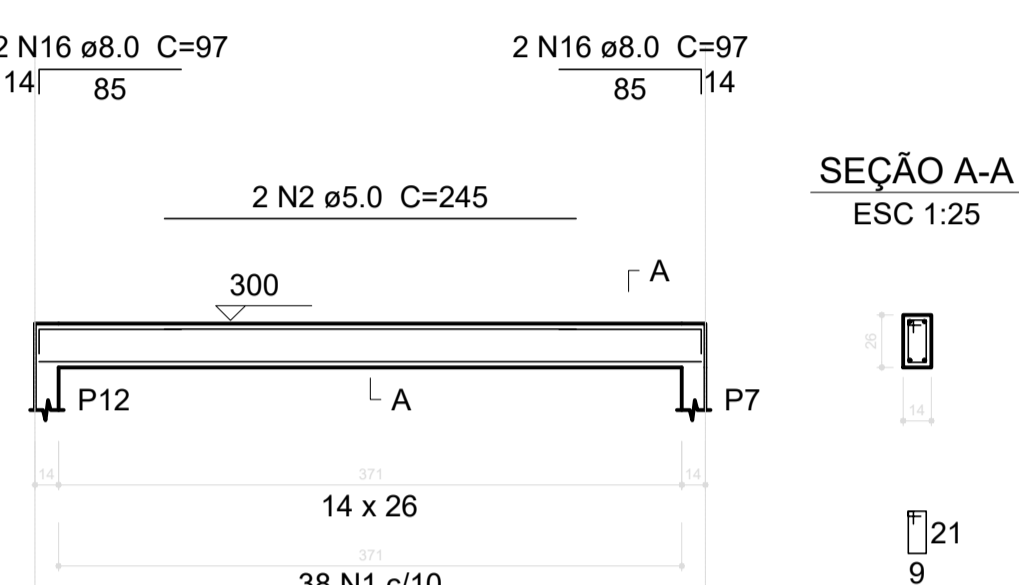
V205



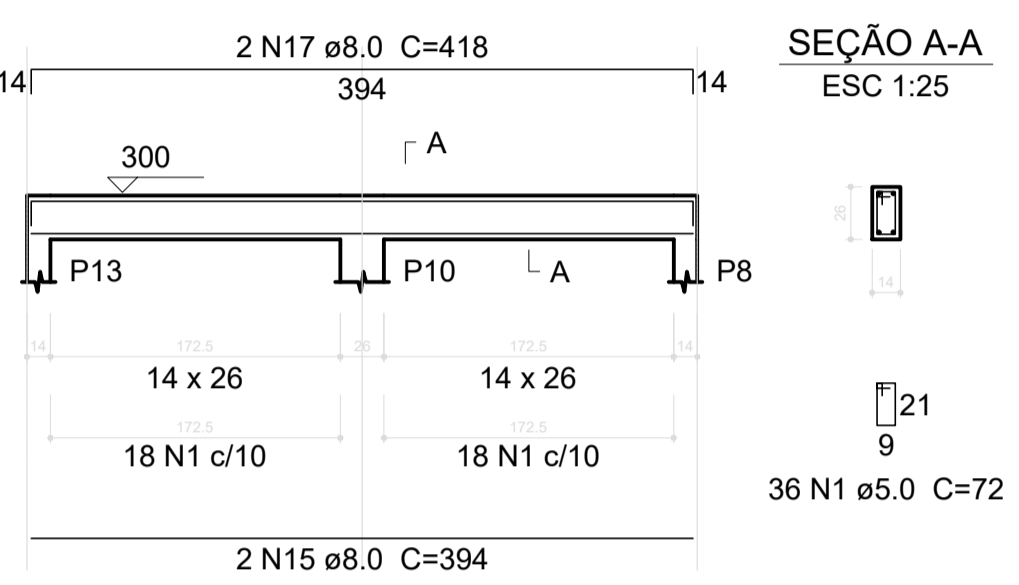
V206



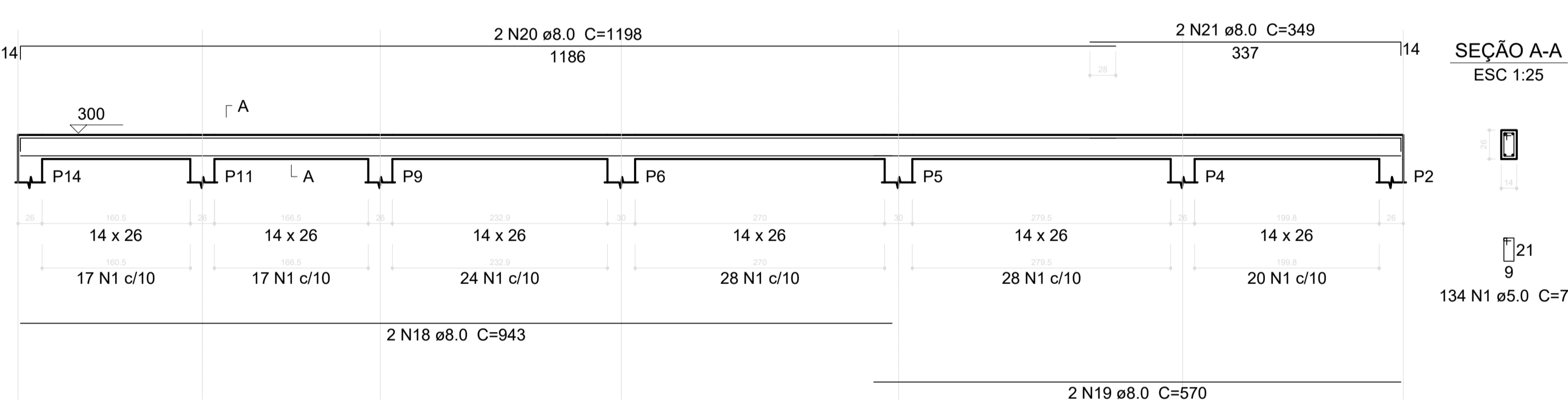
V207



V208



V209



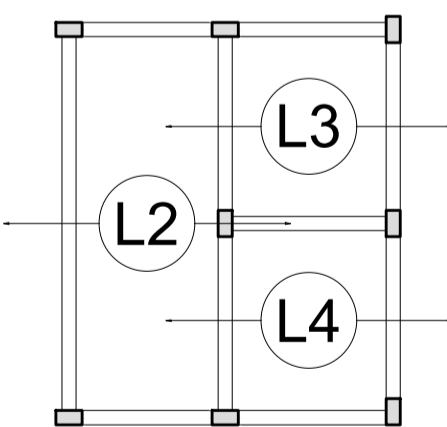
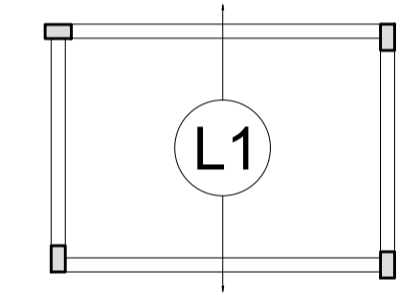
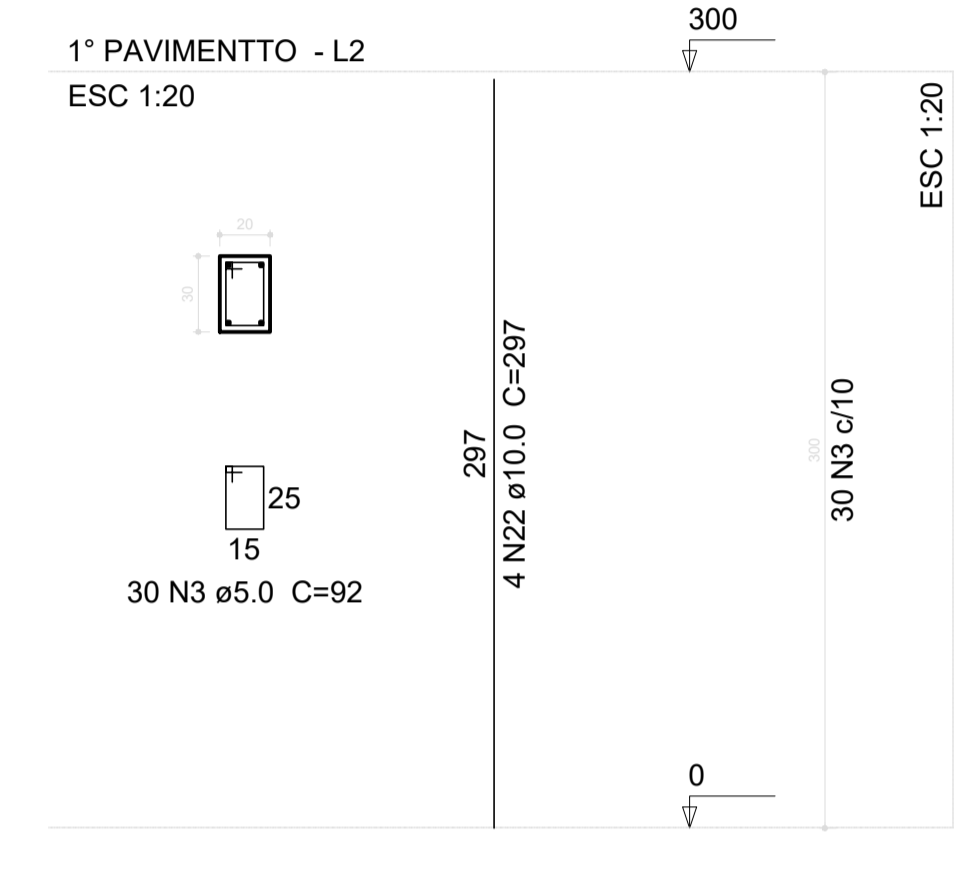
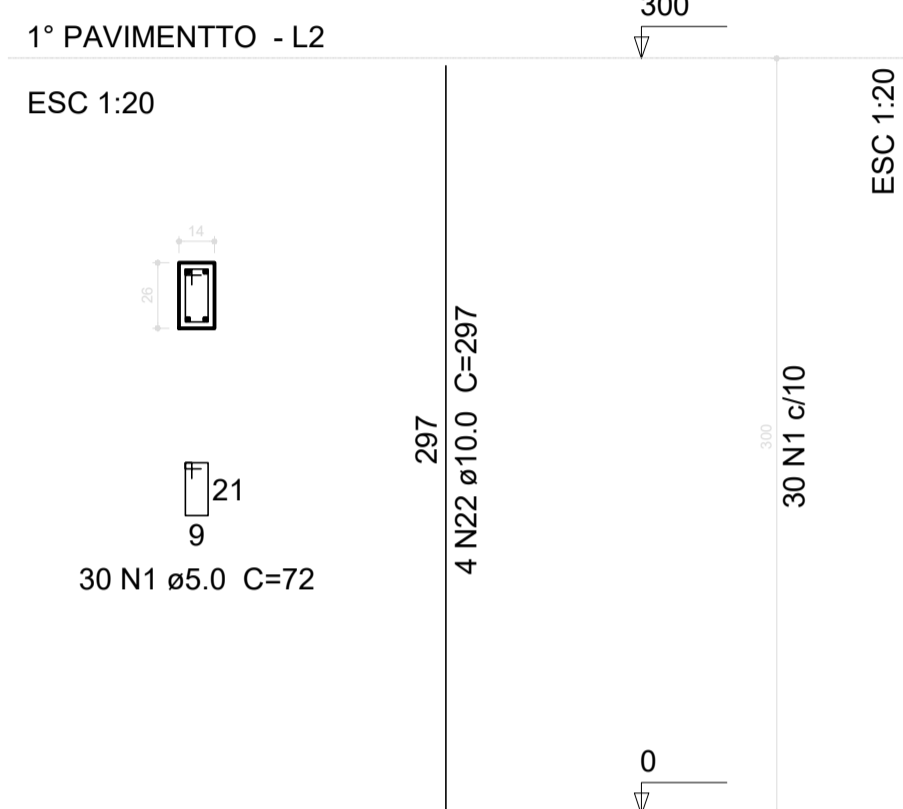
Relação do aço

AÇO	N	DIAM (mm)	QUANT (Barras)	UNIT (cm)	C.TOTAL (cm)
CA60	1	5.0	738	72	53136
	2	5.0	2	245	490
	3	5.0	60	92	5520
CA50	4	8.0	2	403	806
	5	8.0	4	434	1736
	6	8.0	2	336	672
	7	8.0	2	360	720
	8	8.0	2	345	690
	9	8.0	2	361	722
	10	8.0	2	192	384
	11	8.0	2	200	400
	12	8.0	2	411	822
	13	8.0	2	241	482
	14	8.0	2	265	530
	15	8.0	4	394	1576
	16	8.0	4	97	388
	17	8.0	2	418	836
	18	8.0	2	943	1886
	19	8.0	2	570	1140
	20	8.0	2	1198	2396
	21	8.0	2	349	698
	22	10.0	56	297	16632

Resumo do aço

AÇO	DIAM (mm)	C.TOTAL (m)	PESO + 10 % (kg)
CA50	8.0	168.9	73.3
CA60	10.0	166.4	112.8
PESO TOTAL (kg)			
CA50		186.1	
CA60		100.3	

Volume de concreto (C-30) = 3.21 m³
 Área de forma = 62.66 m²



Armação positiva das lajes do pavimento 1° PAVIMENTTO (Eixo X) escala 1:50

NOTAS

LEGENDA

MAPA-CHAVE

ATUALIZAÇÃO

CONTRATADA:	CARVALHO AMARAL ENGENHARIA CNPJ nº: 16.783.066/0001-35 Avenida Mestre Firmino, nº 726, 1ª andar Centro, Montes Claros/MG. CEP: 36401-074	RESP. TEC. LWAN MATHEUS COSTA SOUZA REG. CREA: 255.542/D
CONTRATANTE:	PREFEITURA MUNICIPAL DE PIRAPÓRA/MG CNPJ nº: 23.538.463/0001-21 R. Ant. Nascimento, 274 Centro, Pirapóra/MG. CEP: 39.270-000	MUNICÍPIO/ÁREA: MUNICÍPIO DE PIRAPÓRA/MG RESPONSÁVEL CONTRATANTE: PREF. MUNICIPAL DE PIRAPÓRA
TÍTULO:	PROJETO ESTRUTURAL CONSTRUÇÃO DE QUADRA COBERTA ARMAÇÃO DE VIGAS E PILARES	ENDEREÇO DA OBRA: RUA ADELSON SANTANA, 592, SAGRADA FAMÍLIA PIRAPÓRA/MG
DATA:	17/11/2021	ESCALA: INDICADA
PRONCHIA:	04/05	

REV.	EMISSÃO INICIAL	17/11/21	K.C.A.B	L.M.C.S
REV.	DESCRIÇÃO	DATA	EXEC.	VERIF.
0	EMISSÃO INICIAL	17/11/21	K.C.A.B	L.M.C.S
	DESCRIÇÃO	DATA	EXEC.	VERIF.

ARQUIVO: DE-2021.1811-MG.PIR-EST-EXE.001=0