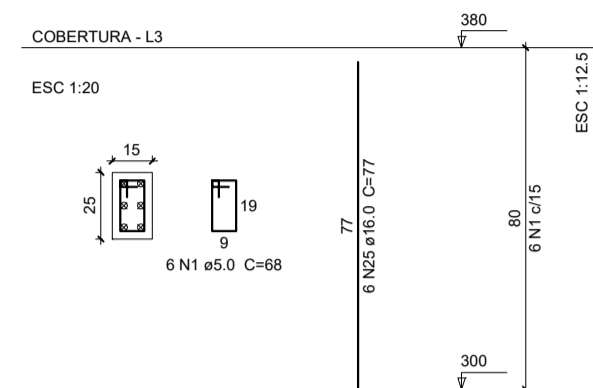
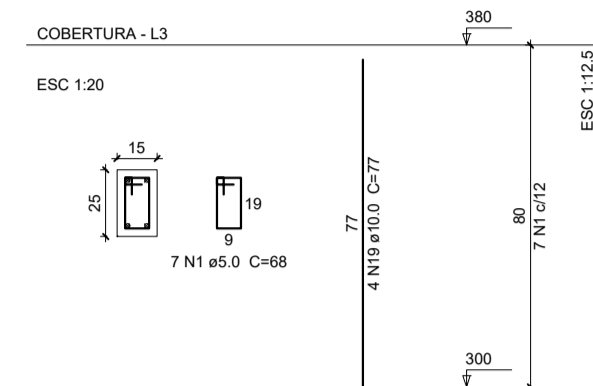


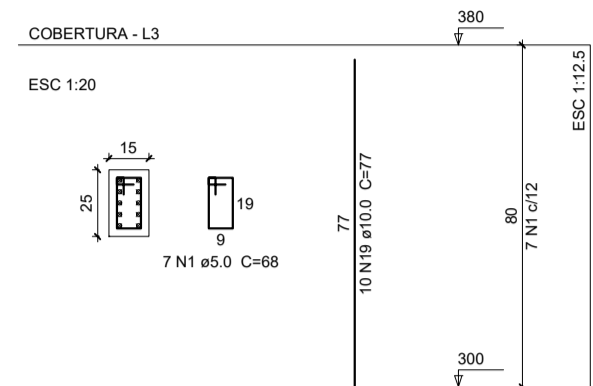
P31



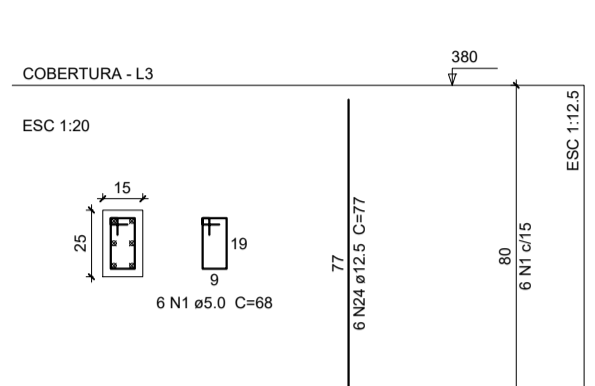
P33=P39=P43=P50=P54=P55=P56=P57



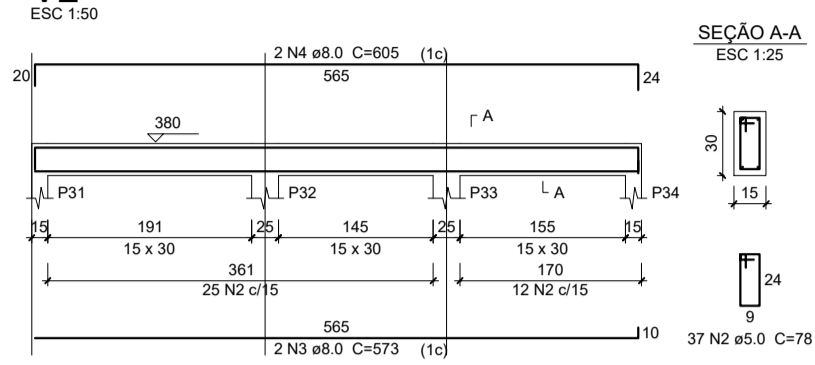
P34



P58



V2



Relação do aço

ACO	N	DIAM	Q	UNIT (cm)	C TOTAL (cm)
CA50	1	5.0	75	68	5100
CA50	2	5.0	106	78	14508
CA50	3	8.0	2	573	1146
CA50	4	8.0	2	605	1210
CA50	5	8.0	2	300	600
CA50	6	8.0	4	512	2048
CA50	7	8.0	2	88	176
CA50	8	8.0	2	270	540
CA50	9	8.0	2	290	580
CA50	10	8.0	2	522	1044
CA50	11	8.0	2	93	186
CA50	12	8.0	2	245	490
CA50	13	8.0	2	504	1008
CA50	14	8.0	2	840	1680
CA50	15	8.0	2	384	768
CA50	16	8.0	2	424	848
CA50	17	8.0	1	110	110
CA50	18	8.0	2	544	1088
CA50	19	10.0	42	77	3234
CA50	20	10.0	1	154	154
CA50	21	10.0	2	219	438
CA50	22	10.0	2	188	376
CA50	23	10.0	2	248	496
CA50	24	12.5	6	77	462
CA50	25	15.0	6	77	462

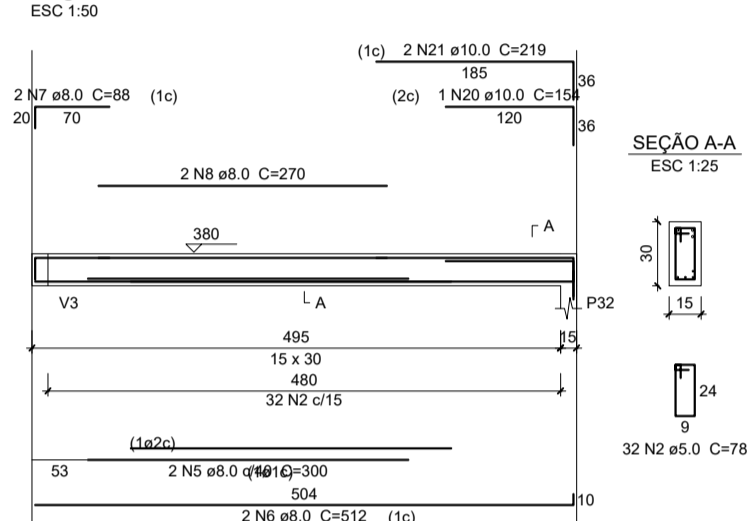
Resumo do aço

ACO	DIAM	C TOTAL (m)	PESO
CA50	8.0	129.3	51.0
CA50	10.0	47	28.3
CA50	12.5	4.7	4.6
CA50	15.0	4.7	7.3
CA50	5.0	196.1	30.1
PESO TOTAL			
CA50	52.2		
CA50	30.1		

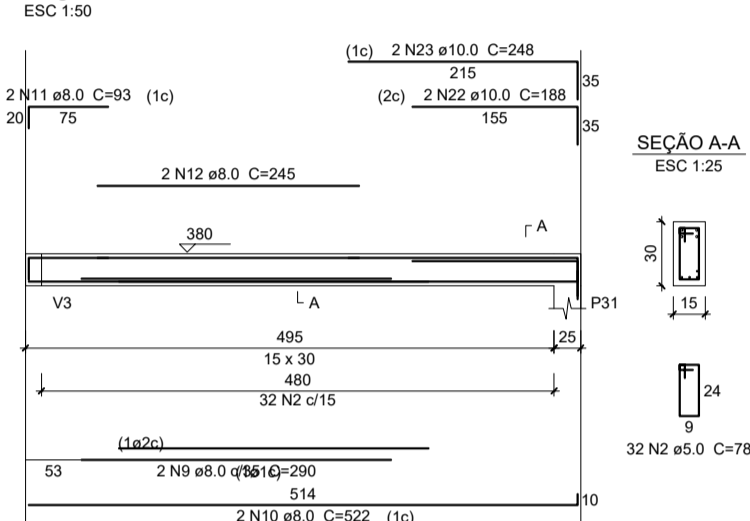
Vol. de concreto total (C-25) = 1,68 m³

Área de forma total = 23,62 m²

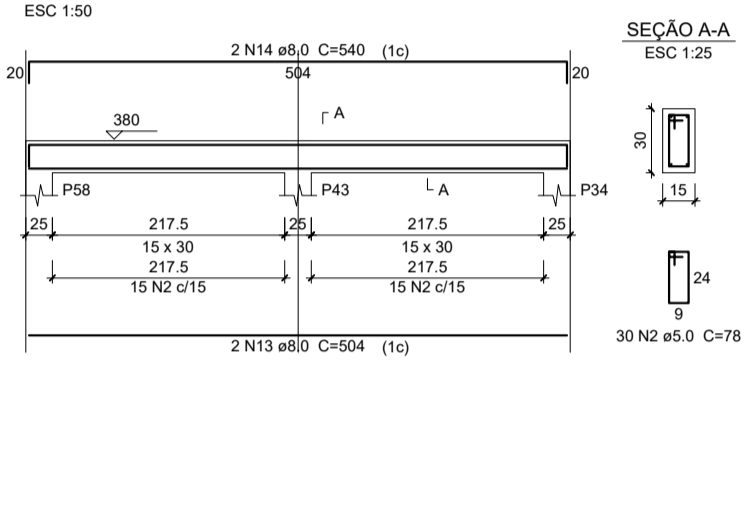
V5



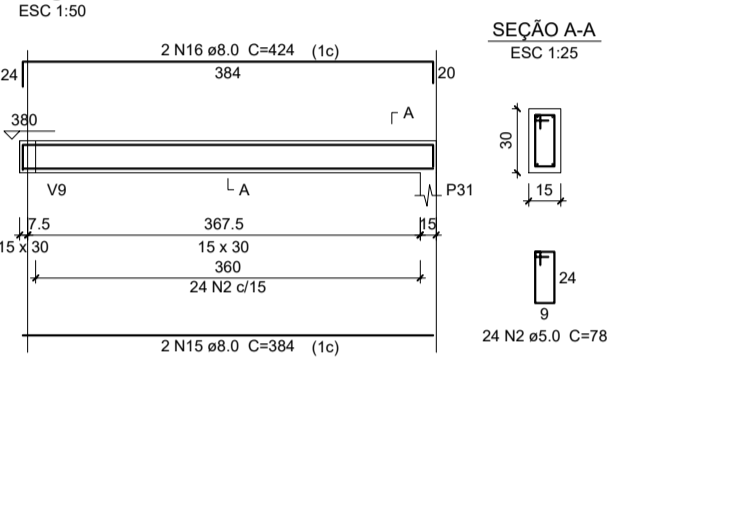
V6



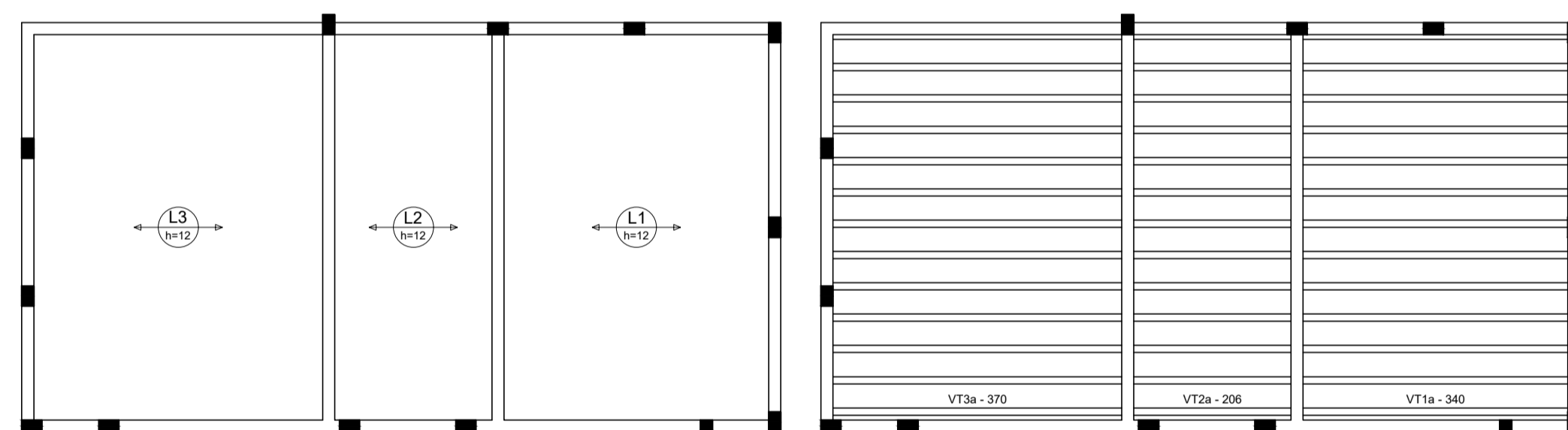
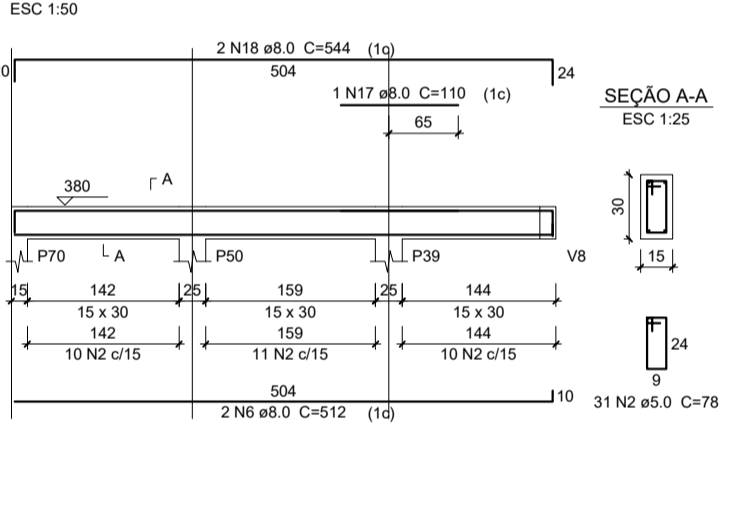
V7



V8



V9



Armação positiva das lajes do pavimento COBERTURA (Eixo X)
escala 1:50

Planta de vigotas pré-moldadas
escala 1:50

TÍTULO: AMPLIAÇÃO DE UNIDADE DE SAÚDE			
PROPRIETÁRIO: PREFEITURA MUNICIPAL DE PIRAPORA CNPJ - 23.539.463/0001-21			
OPERAÇÃO 1061293-96		CONTRATO DE REPASSE 55214/2018	
RESPONSÁVEL TÉCNICO: RODRIGO SOARES MAGALHÃES ENGENHEIRO CIVIL 156075/D	DATA: MAIO/21	ESCALA: INDICADA	FRANCHA: 08/15
ENDEREÇO: AV. GOVERNADOR VALADARES - CENTRO PIRAPORA - CEP - 39270-000	ÁREA DO LOTE: 1259,72 m²	ÁREA A CONSTRUIR: 229,25 m²	