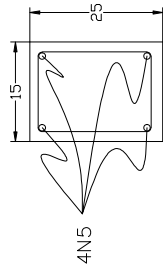
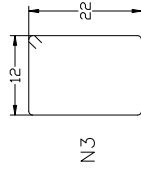


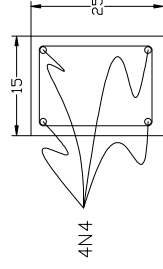
N6 ϕ 5mm - c/75 (CADA 15)



4N5 N5 ϕ 10mm



N3 ϕ 5mm - c/75 (CADA 15)



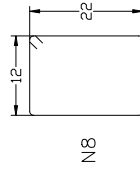
4N4 N4 ϕ 10mm

VIGA BALDRAME (VB)

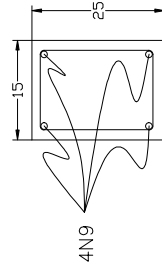
ESCALA 1:10

CINTA SOBRE ALVENARIA DE 15cm

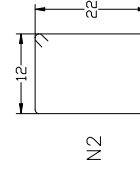
ESCALA 1:10



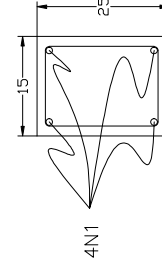
N8 ϕ 5mm - c/75 (CADA 15)



4N9 N9 ϕ 10mm



N2 ϕ 5mm - c/75 (CADA 15)



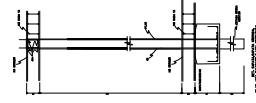
4N1 N1 ϕ 10mm

VIGA ESTRUTURAL (VE)

ESCALA 1:10

PILAR (P)

ESCALA 1:10



REVISÃO	DESCRIÇÃO
01	EMISSÃO
02	REVISÃO
03	REVISÃO
04	REVISÃO
05	REVISÃO
06	REVISÃO
07	REVISÃO
08	REVISÃO
09	REVISÃO
10	REVISÃO



UNIDADE BÁSICA DE SAÚDE SÃO GERALDO

ENDERECO:
RUA RUBI S/Nº SÃO GERALDO, PIRAPORAMG

PROPRIETARIO:

PREFEITURA MUNICIPAL DE PIRAPORA
CNPJ - 23.539.463/0001-21

RESPONSÁVEL TÉCNICO:

RODRIGO SOARES MAGALHÃES
ENGENHEIRO CIVIL CREA 198076/D

CONTEUDO:
PROJETO ESTRUTURAL (PLANTA DE FORMA)

ÁREA DO LOTE:
1012,06 M²

ÁREA A CONSTRUIR:
525,30 M²

DATA:
OUTUBRO/2019

ESCALA:
INDICADA

FRANCHA:
5/10