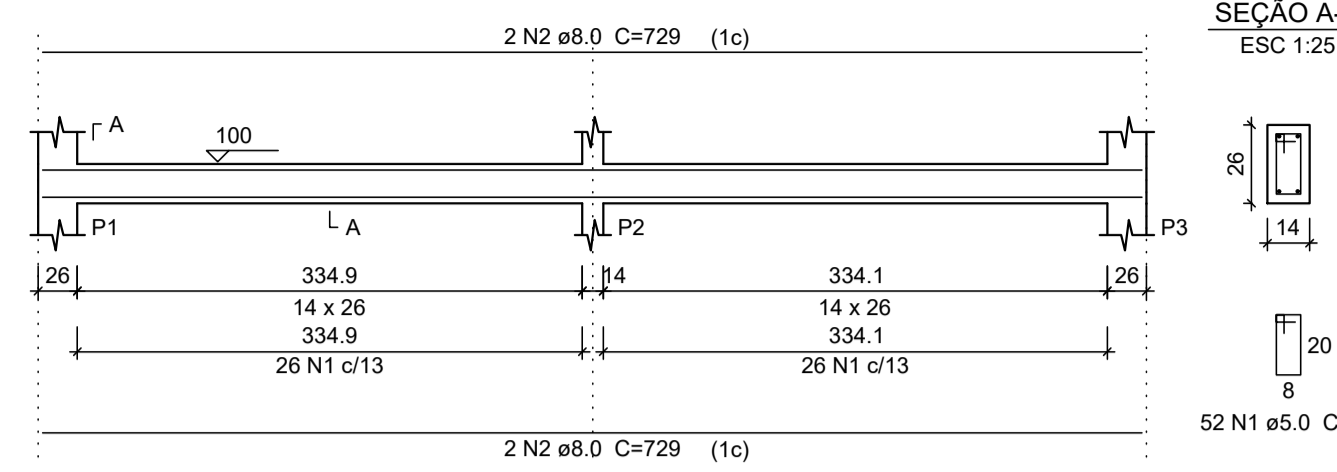


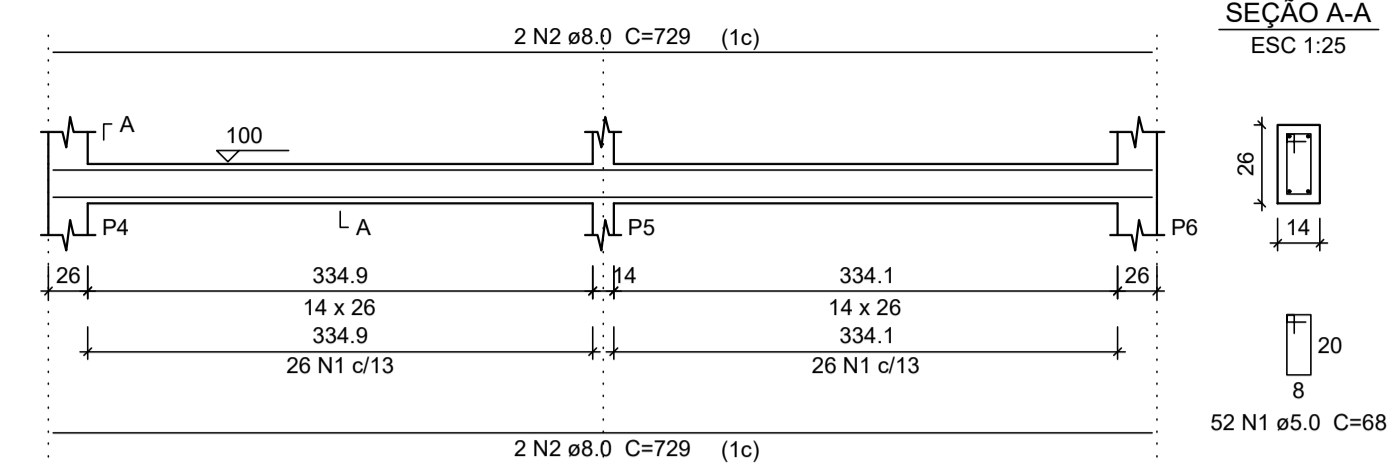
Armação positiva das lajes do pavimento T1 (Eixo X)
escala 1:50

Planta de vigotas pré-moldadas
escala 1:50

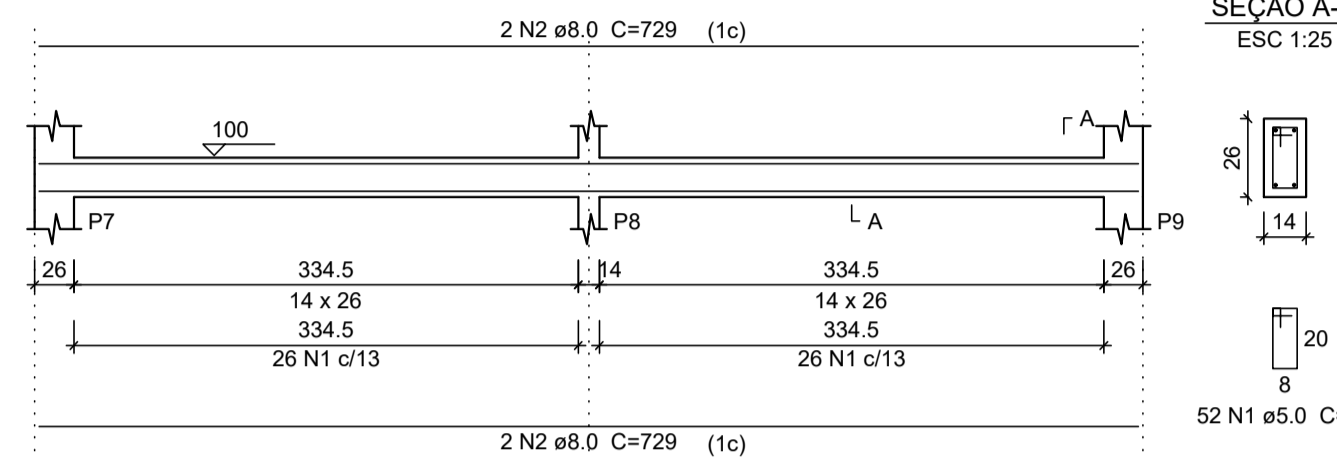
V201
ESC 1:50



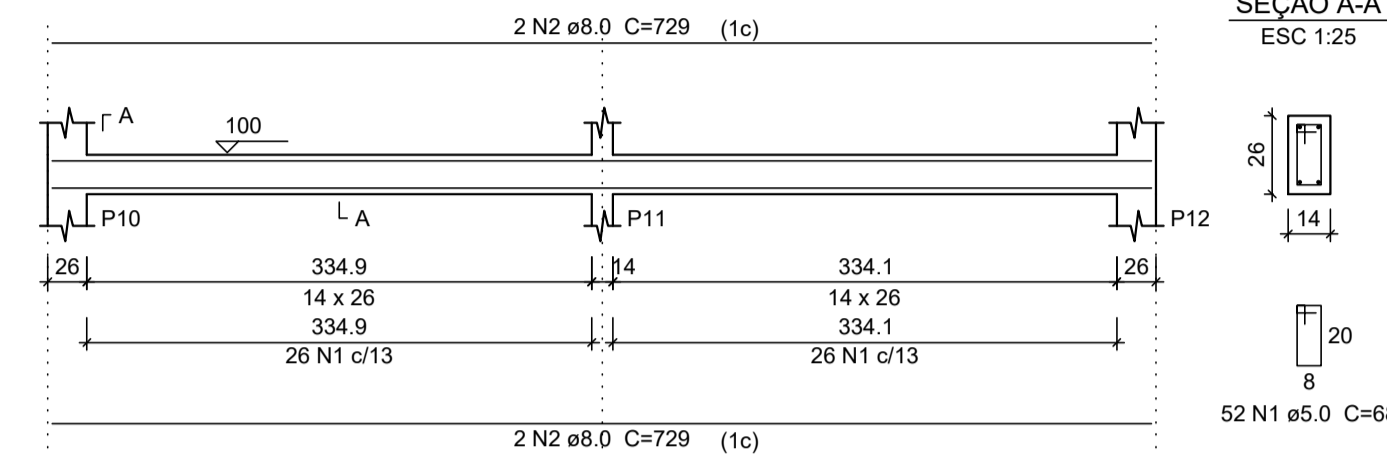
V202
ESC 1:50



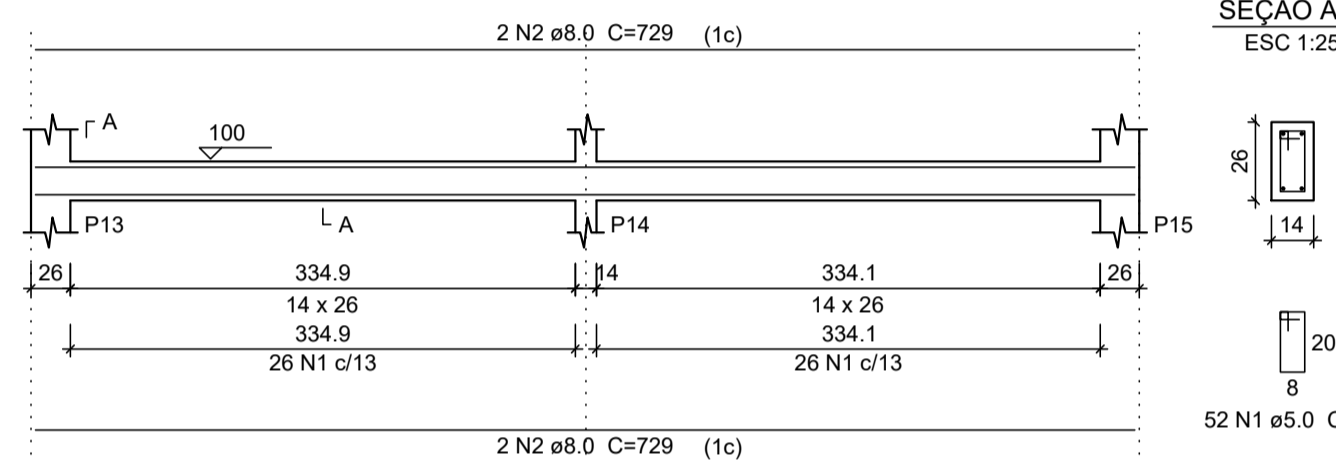
V203
ESC 1:50



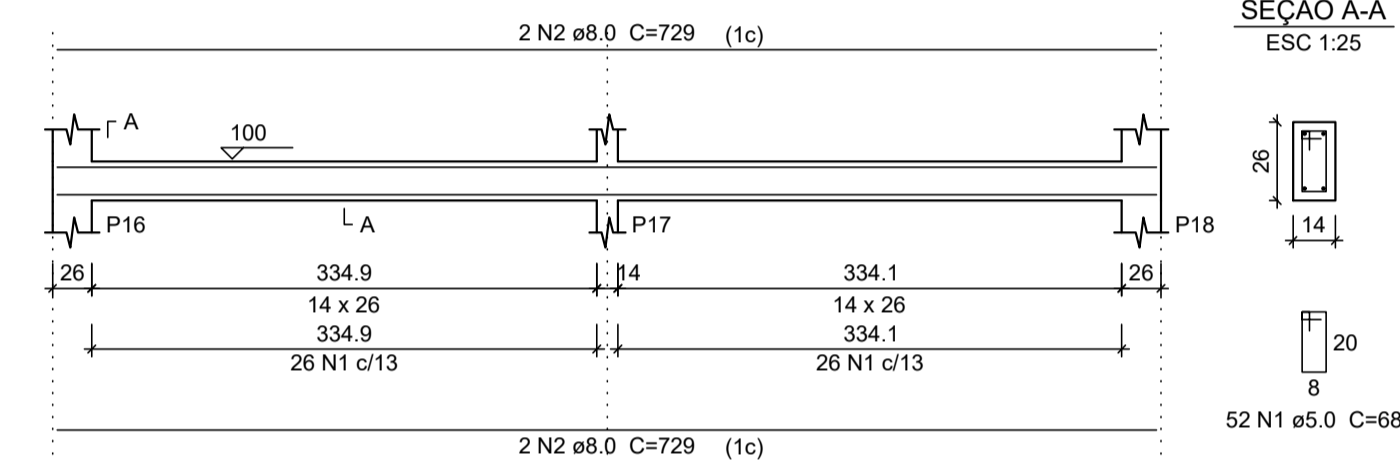
V204
ESC 1:50



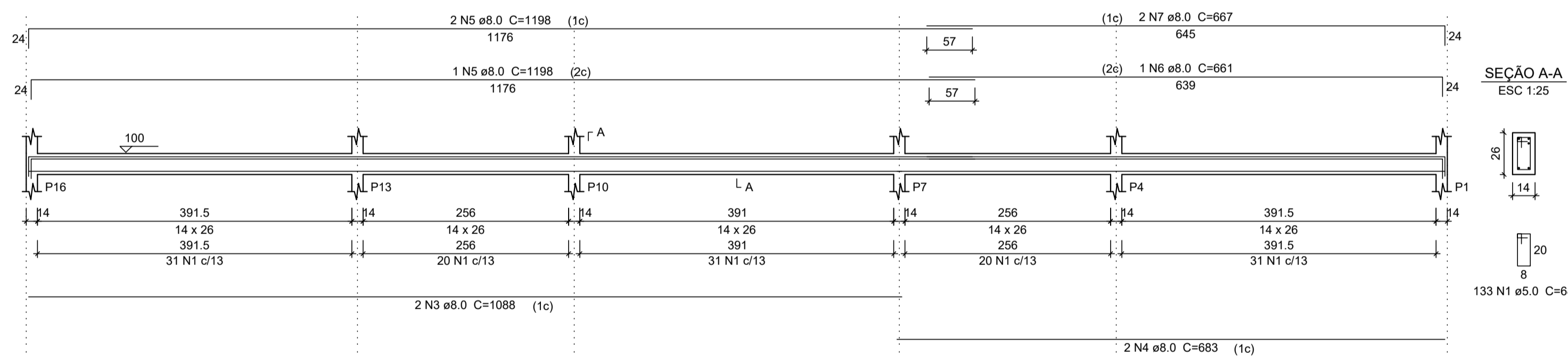
V205
ESC 1:50



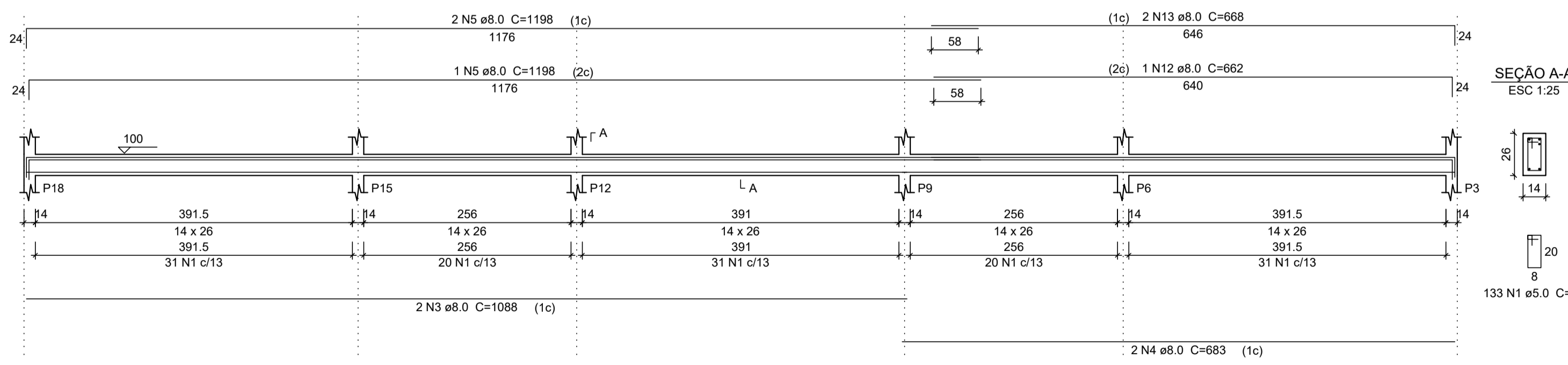
V206
ESC 1:50



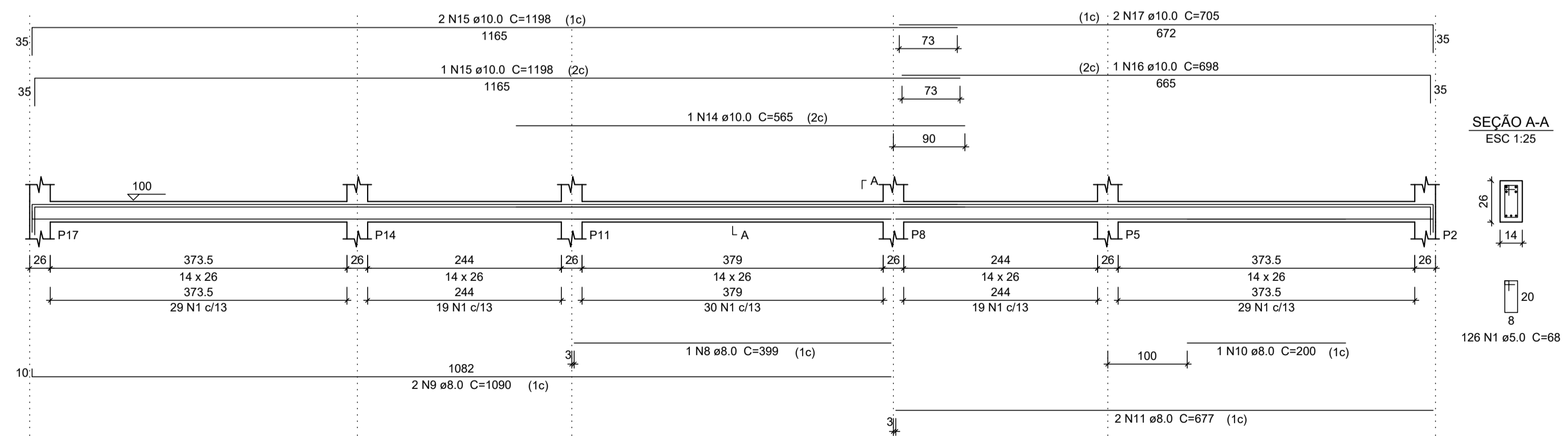
V207
ESC 1:50



V209
ESC 1:50



V208
ESC 1:50



Relação do aço

AÇO	N	DIAM (mm)	QUANT (Barra)	UNIT (cm)	C.TOTAL (cm)
CA60	1	5.0	704	68	47872
CA50	2	8.0	24	729	17496
	3	8.0	4	1088	4352
	4	8.0	4	683	2732
	5	8.0	6	1198	7188
	6	8.0	1	661	661
	7	8.0	2	667	1334
	8	8.0	1	399	399
	9	8.0	2	1090	2180
	10	8.0	1	200	200
	11	8.0	2	677	1354
	12	8.0	1	662	662
	13	8.0	2	666	1336
	14	10.0	1	565	565
	15	10.0	3	1198	3594
	16	10.0	1	698	698
	17	10.0	2	705	1410

Resumo do aço

AÇO	DIAM (mm)	C.TOTAL (m)	PESO (kg)
CA50	8.0	399	157.60
CA60	10.0	62.7	38.68
CA60	5.0	478.8	73.73
PESO TOTAL (kg)			
CA50		196.28	
CA60		73.73	

Volume de concreto (C-25) = 3.54 m³
Área de forma = 64.15 m²

NOTAS

LEGENDA

MAPA-CHAVE

VERIFICAÇÃO

APROVAÇÃO

CONTRATANTE: PREFEITURA MUNICIPAL DE PIRAPORA/MG

 CNPJ Nº: 23.539.463/0001-21
 R. Ant. Nascimento, 274
 Centro, Pirapora/MG,
 CEP: 39.270-000

CONTRATADA: CARVALHO AMARAL ENGENHARIA

 CNPJ Nº: 16.783.066/0001-35
 Avenida Mestre Firmino, nº 725,
 1º andar, Centro, Montes Claros/MG,
 CEP: 39401-074

RESPONSÁVEL TÉCNICO: LWAN MATHEUS COSTA SOUZA REG. CREA: 255.542/D

MUNICÍPIO/ÁREA: MUNICÍPIO DE PIRAPORA/MG

ENDEREÇO DA OBRA: AVENIDA HERCULANO CINTRA MOURÃO

DATA: 22/10/2021 ESCALA: INDICADA PRANCHA: 04/08

ARQUIVO: DE-2021.1690-MG.PIR-ARQ-EXE.001=0