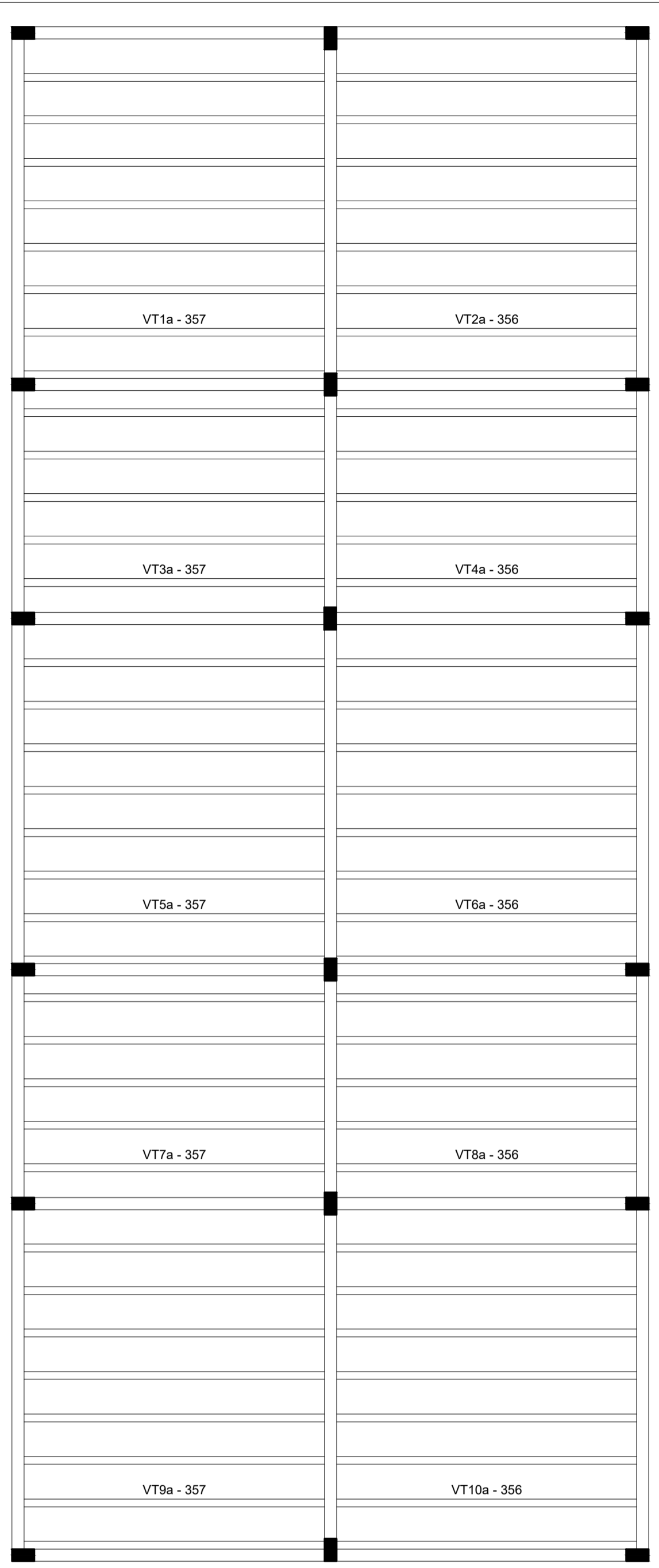


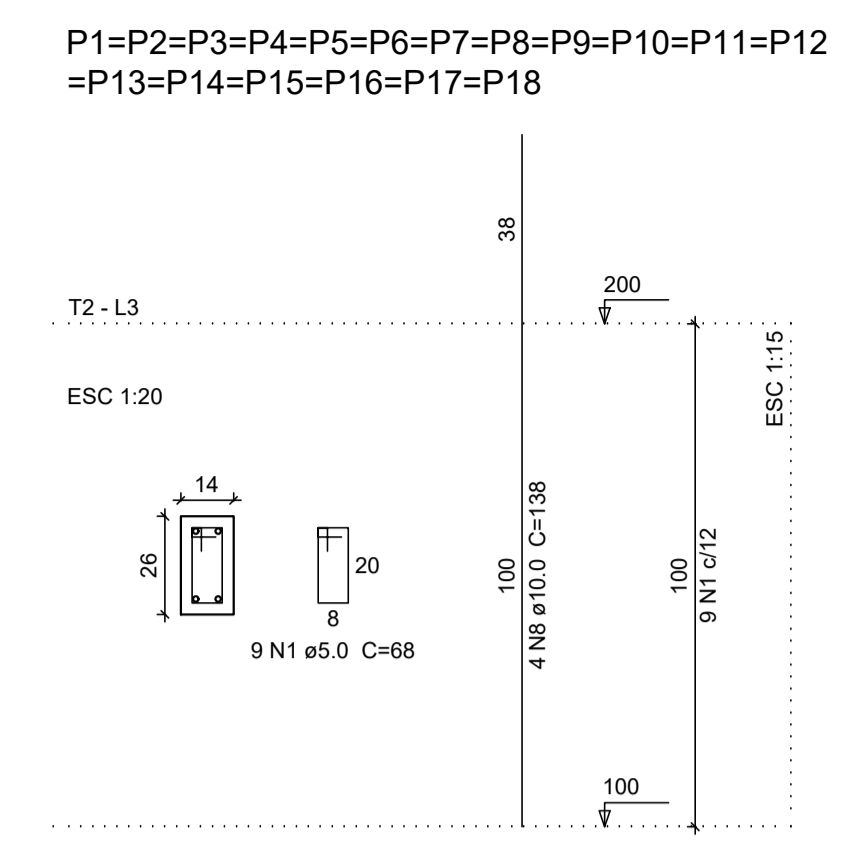
Armação positiva das lajes do pavimento T2 (Eixo X)

escala 1:50

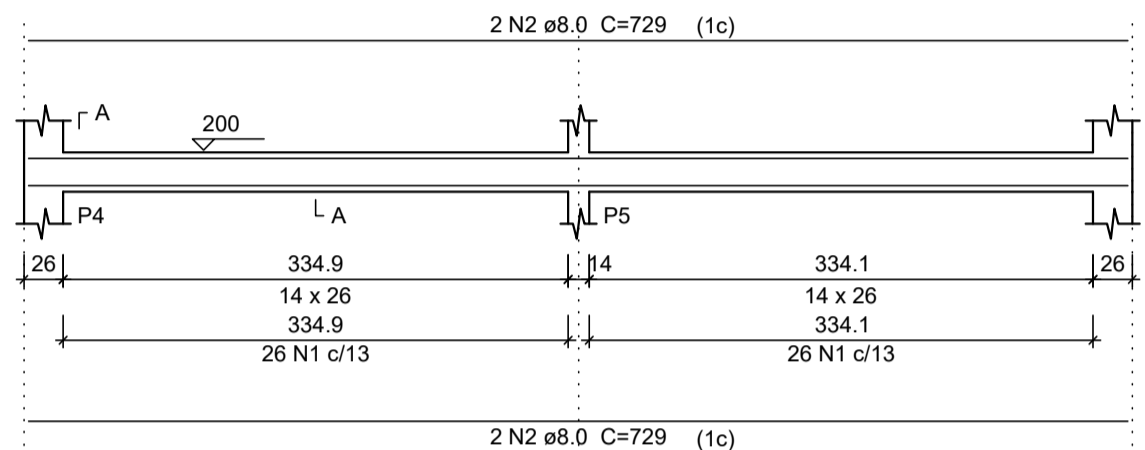


Planta de vigotas pré-moldadas

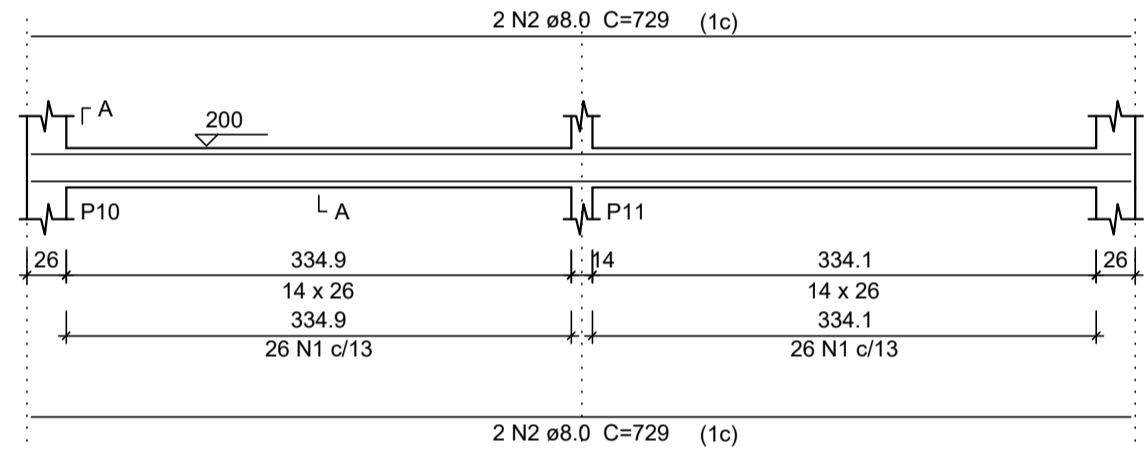
escala 1:50



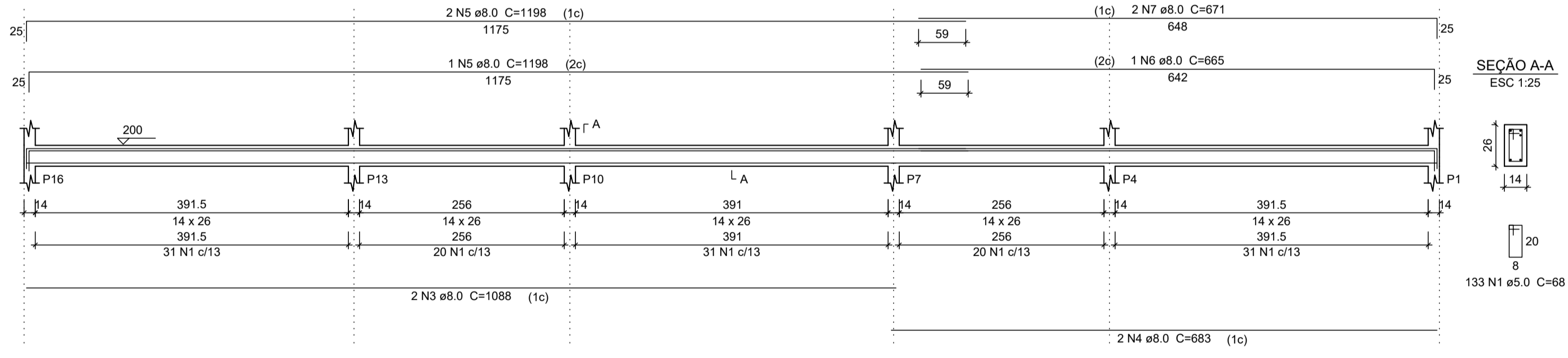
V302



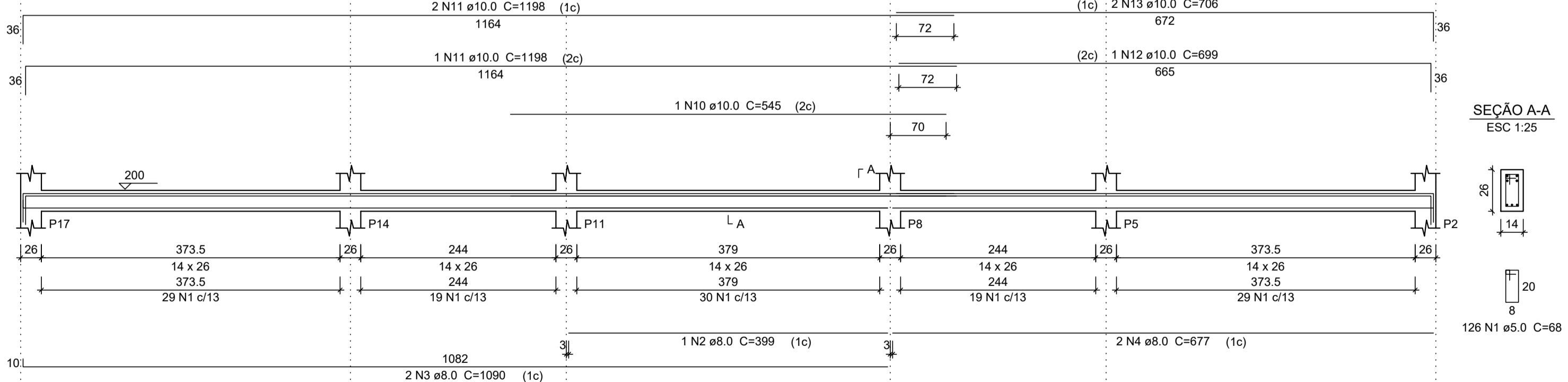
V304



V307

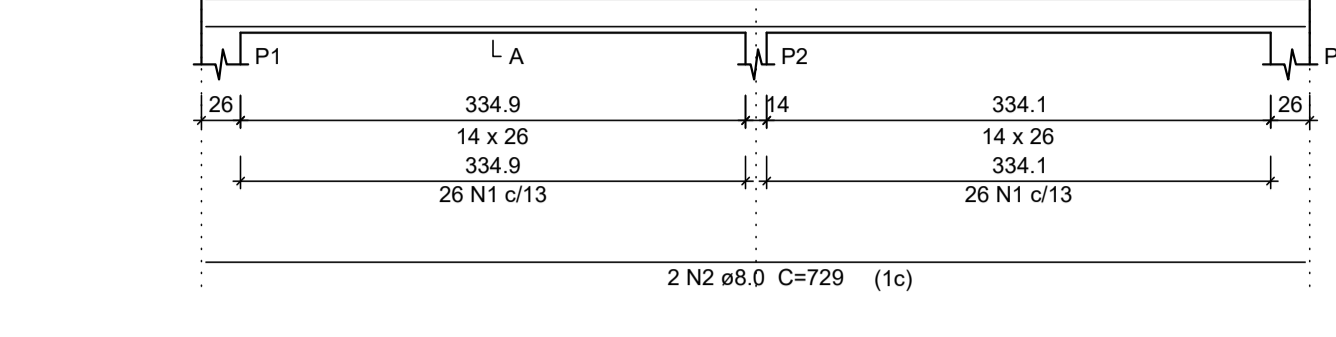


V308

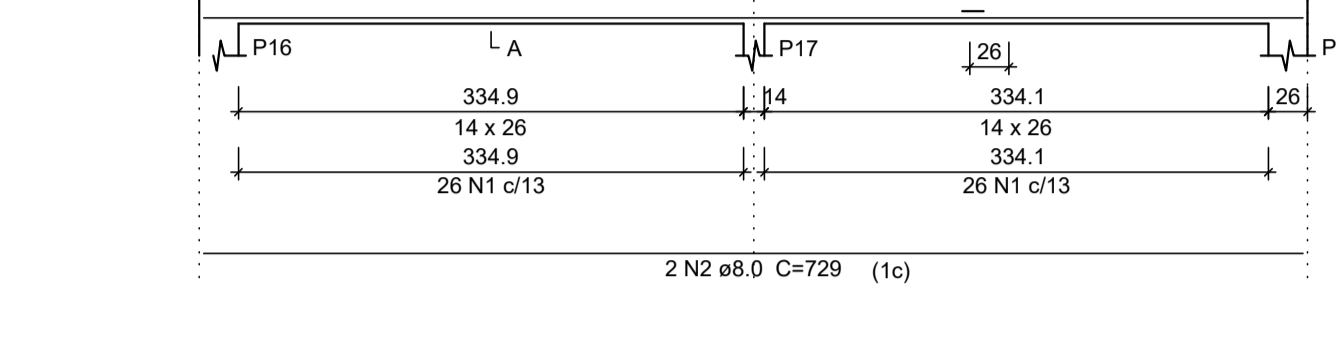


P1=P2=P3=P4=P5=P6=P7=P8=P9=P10=P11=P12
=P13=P14=P15=P16=P17=P18

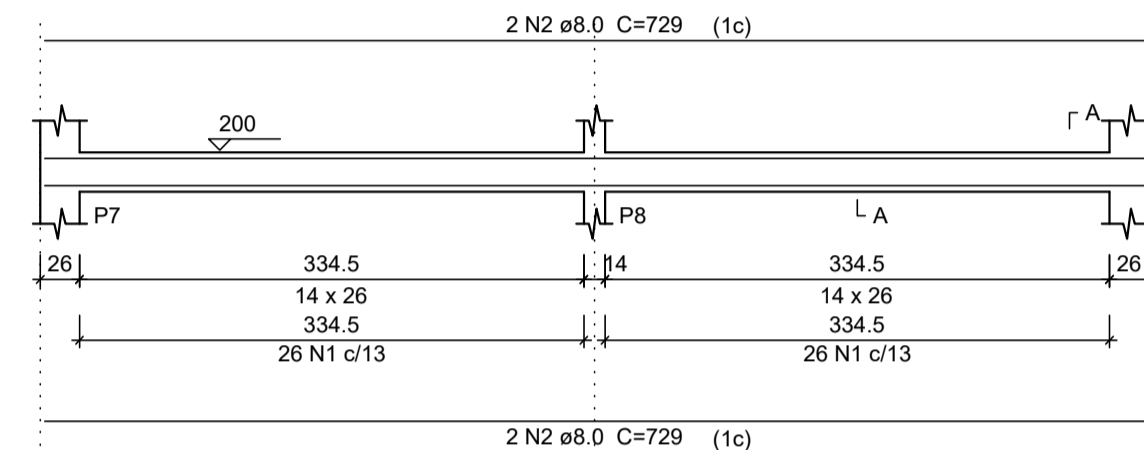
V301



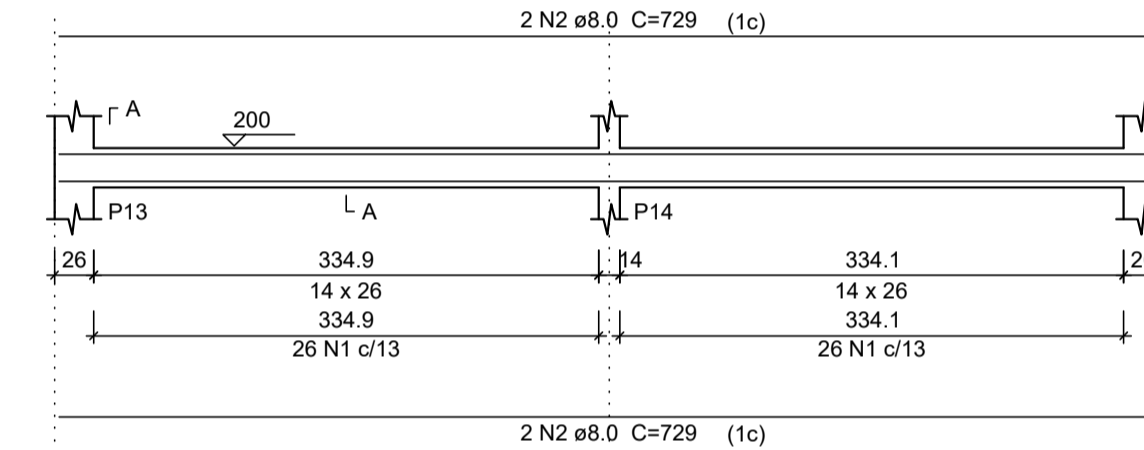
V306



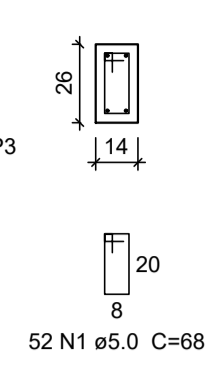
V303



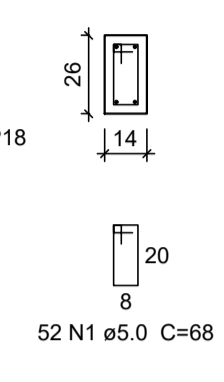
V305



SEÇÃO A-A
ESC 1:25



SEÇÃO A-A
ESC 1:25



Relação do aço

AÇO	N	DIAM (mm)	QUANT (Barras)	UNIT (cm)	C.TOTAL (cm)
CA60	1	5.0	607	68	41276
CA50	2	8.0	24	729	17496
	3	8.0	2	1088	2176
	4	8.0	2	683	1366
	5	8.0	3	1198	3594
	6	8.0	1	665	665
	7	8.0	2	671	1342
	8	10.0	72	138	9936

Resumo do aço

AÇO	DIAM (mm)	C.TOTAL (m)	PESO (kg)
CA50	8.0	266.4	105.23
CA60	5.0	412.8	63.57
PESO TOTAL (kg)			
CA50		166.56	
CA60		63.57	

Volume de concreto (C-25) = 2.9 m³
Área de forma = 55.19 m²

Relação do aço

AÇO	N	DIAM (mm)	QUANT (Barras)	UNIT (cm)	C.TOTAL (cm)
CA60	1	5.0	63	68	17612
CA50	2	8.0	1	399	399
	3	8.0	2	1090	2180
	4	8.0	2	677	1354
	5	8.0	2	1088	2176
	6	8.0	2	683	1366
	7	8.0	3	1198	3594
	8	8.0	1	664	664
	9	8.0	2	670	1340
	10	10.0	1	545	545
	11	10.0	3	1198	3594
	12	10.0	1	699	699
	13	10.0	2	706	1412

Resumo do aço

AÇO	DIAM (mm)	C.TOTAL (m)	PESO (kg)
CA50	8.0	130.8	51.67
CA60	5.0	176.2	27.13
PESO TOTAL (kg)			
CA50		90.23	
CA60		27.13	

Volume de concreto (C-25) = 1.29 m³
Área de forma = 23.36 m²


NOTAS

LEGENDA

MAPA-CHAVE

VERIFICAÇÃO

APROVAÇÃO

CONTRATANTE: PREFEITURA MUNICIPAL DE PIRAPORA/MG

 CNPJ Nº: 23.539.463/0001-21
 R. Ant. Nascimento, 274
 Centro, Pirapora/MG,
 CEP: 39.270-000

CONTRATADA: CARVALHO AMARAL ENGENHARIA

 CNPJ Nº: 16.783.066/0001-35
 Avenida Mestre Firmino, nº 725,
 1º andar, Centro, Montes Claros/MG,
 CEP: 39401-074

RESPONSÁVEL TÉCNICO: LWAN MATEUS COSTA SOUZA REG. CREA: 255.542/D

MUNICÍPIO/ÁREA: MUNICÍPIO DE PIRAPORA/MG

ENDEREÇO DA OBRA: AVENIDA HERCULANO CINTRA MOURÃO

DATA: 22/10/2021 ESCALA: INDICADA PRANCHA: 05\08

ARQUIVO: DE-2021.1690-MG.PIR-ARQ-EXE.001=0