
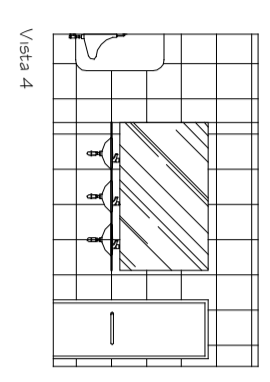
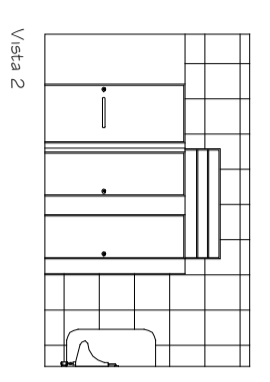
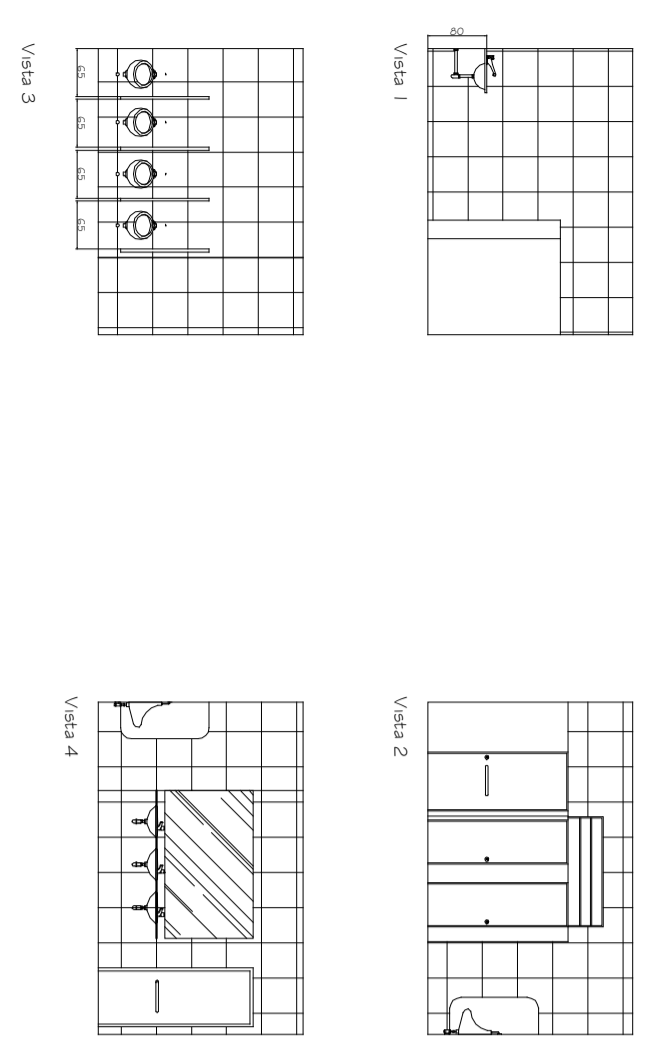
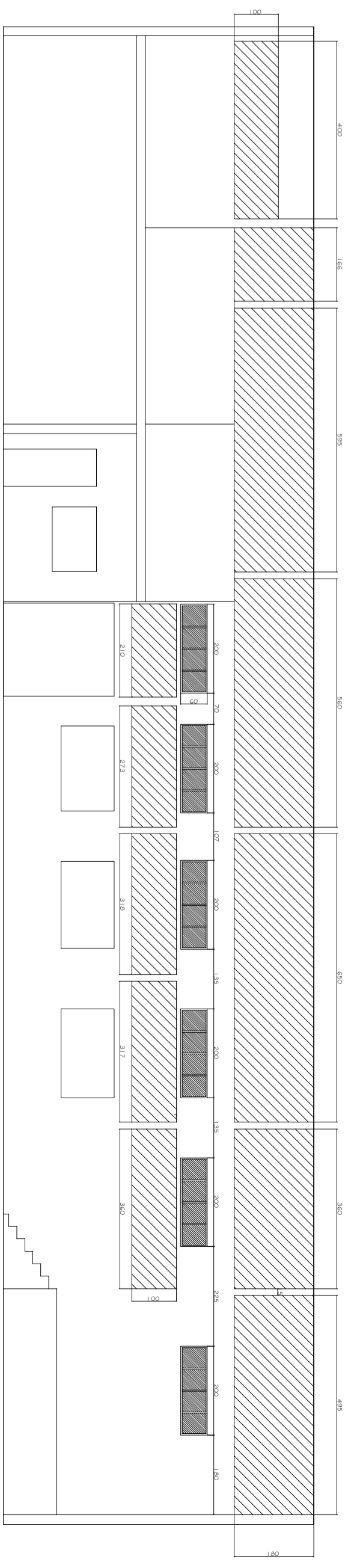
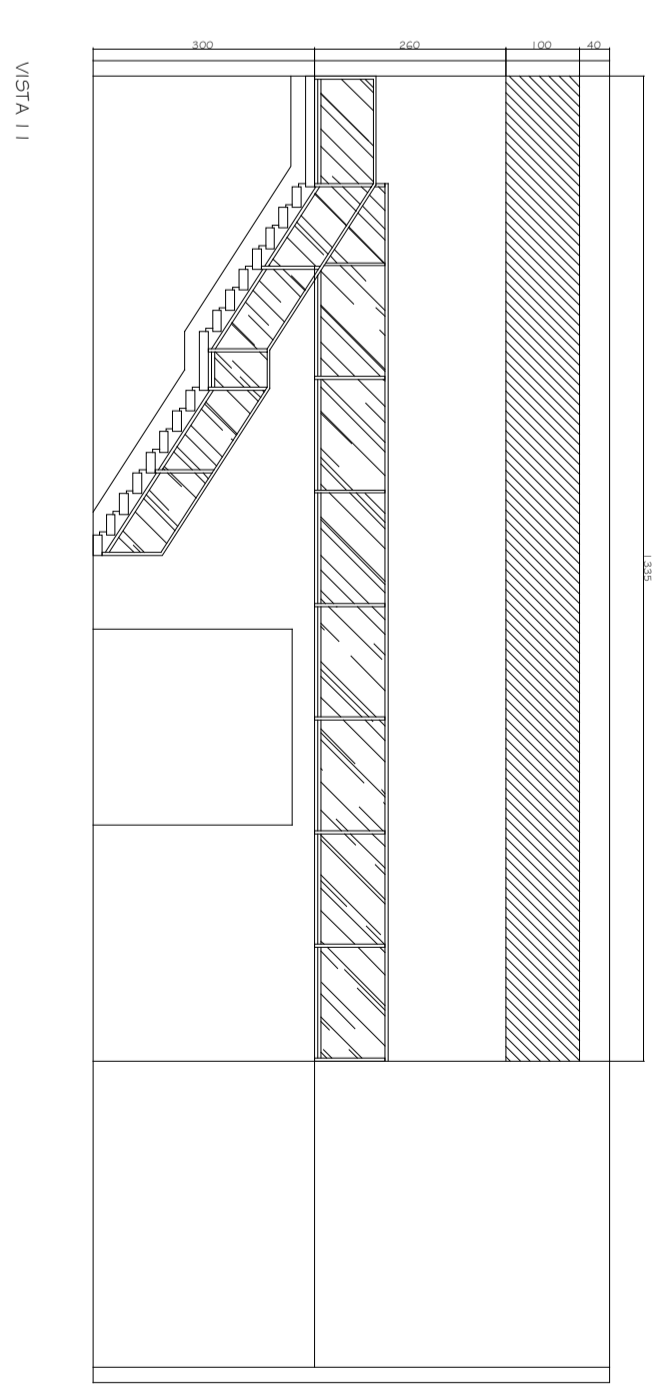
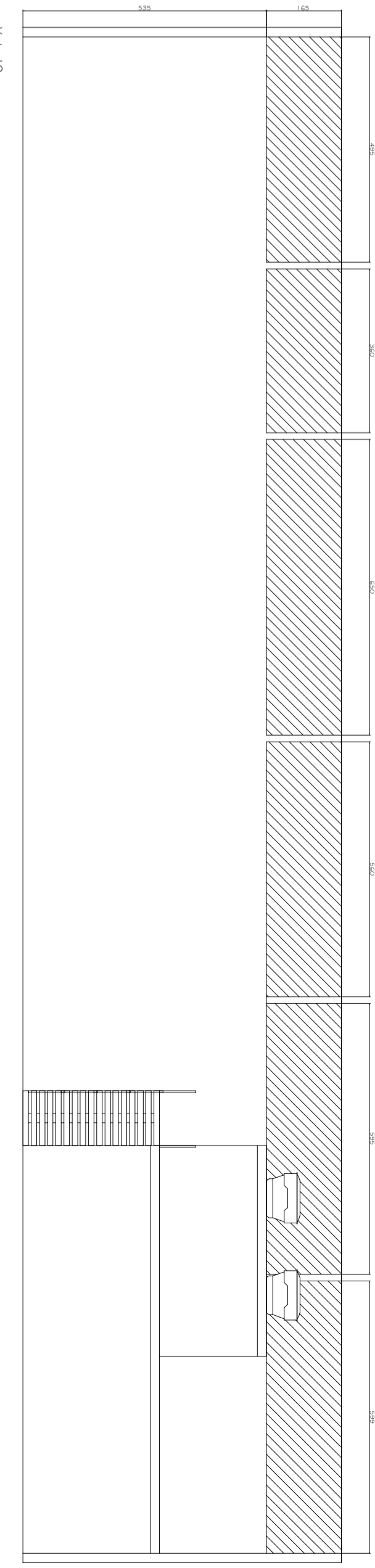
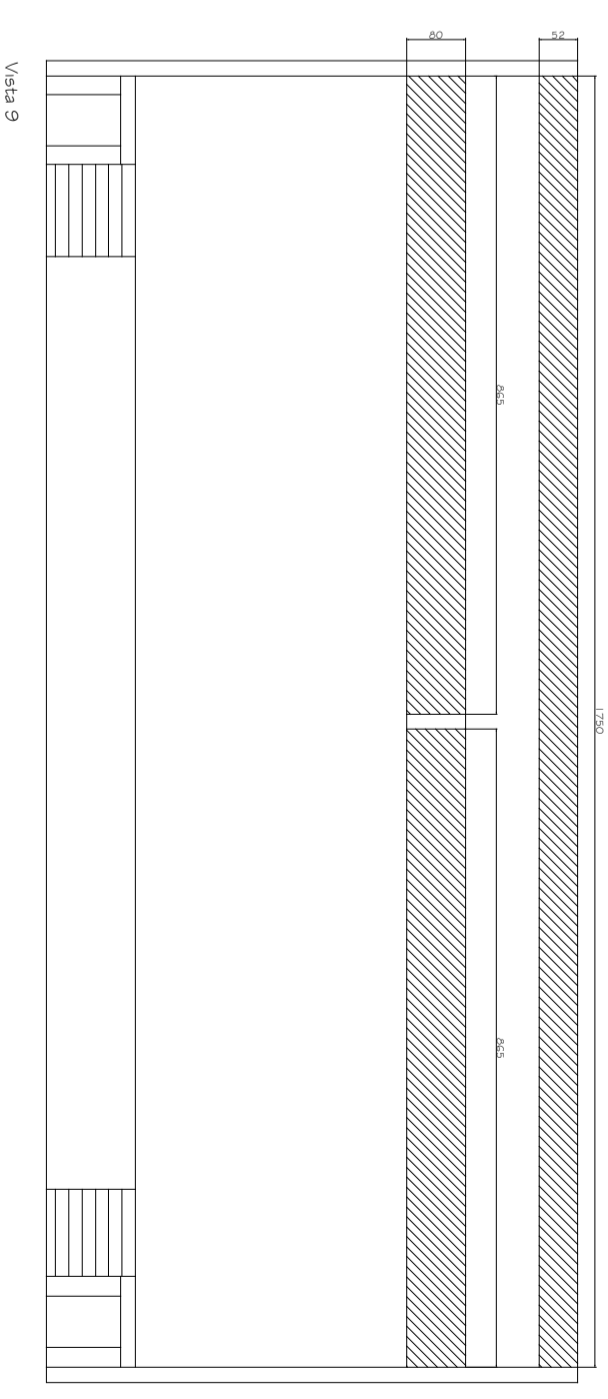
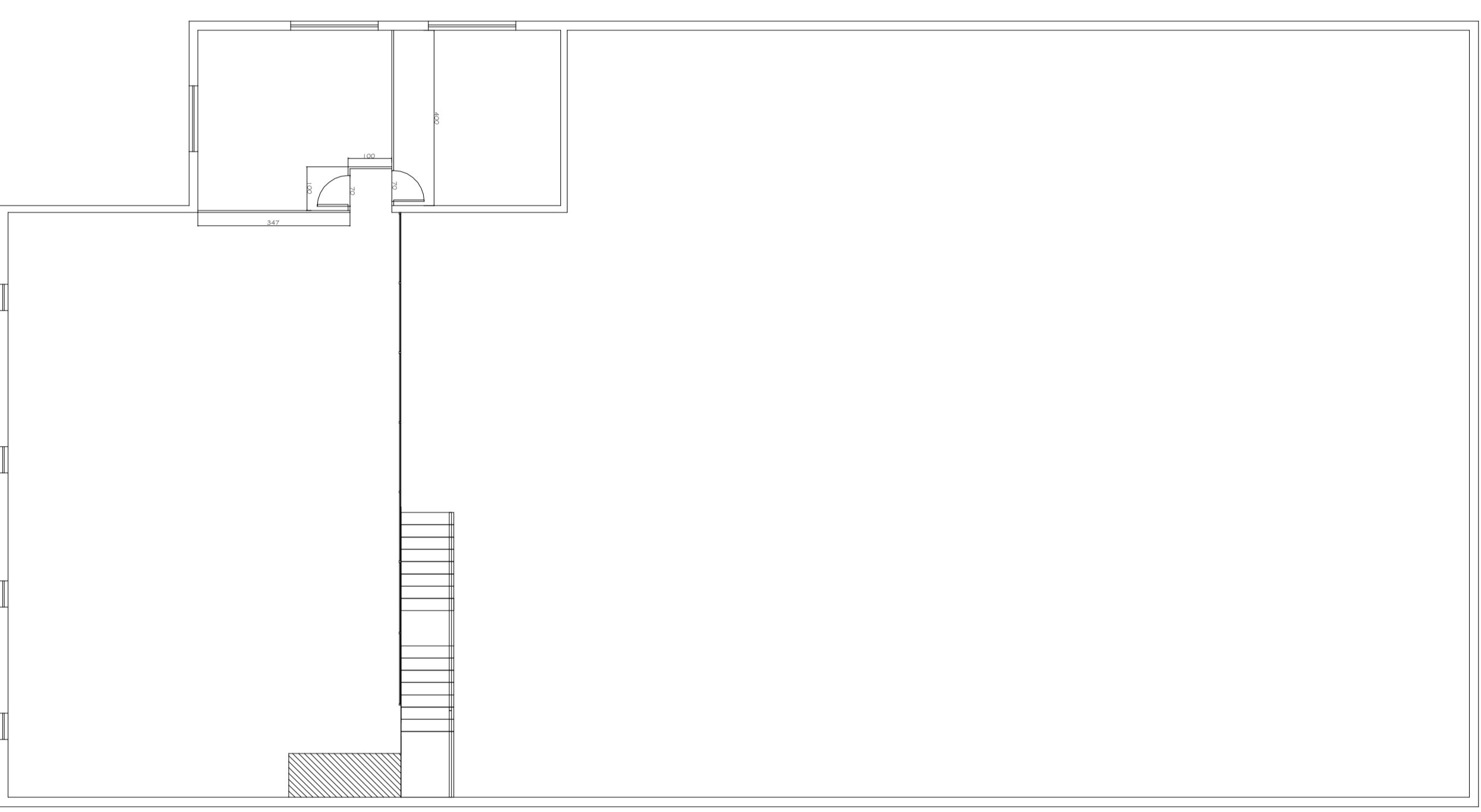
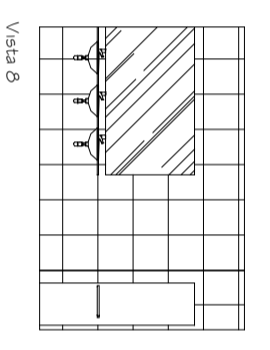
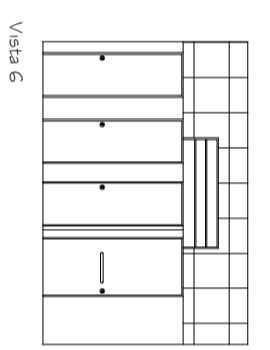
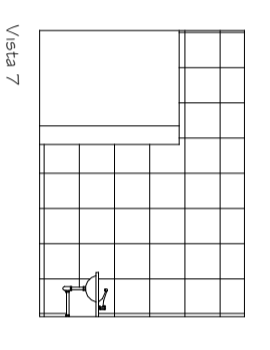
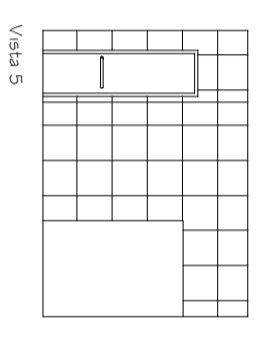
 Paredes a construir
 Existente



Vista 3



Projeto Arquitetônico - Construção

Endereço:
Rua João Pinheiro, 988

Barro - Cidade
Santo Antônio - Piraporina/MG

Lote -
Quadra -
A. Construída
750 m²

A. Lote
852 m²
Escala:
5/E
Data:
25/06/2015

Prefeitura Municipal de Piraporina

Prefeitura Municipal de Piraporina
Eng. Alex Sandro de Jesus Souza
CREA: 173966D